



2012 ULM Softball Game Notes

2012 Schedule

FEBRUARY DATE	OPPONENT	TIME (CT)
10	(1) SIU-EDWARDSVILLE (1) IUPUI	W, 7-6 (9) L, 3-11 (5)
11	(1) NORTHWESTERN STATE (1) SOUTHEAST MISSOURI	W, 10-0 (6) L, 4-8
12	(1) GRAMBLING STATE	W, 12-3 (5)
18	(2) McNeese State	W, 6-2
19	(2) No. 17 Houston (2) McNeese State	L, 0-9 (5) L, 0-2
22	(2) No. 17 Houston at Samford	L, 0-13 (5) W, 7-6 (8)
25	(3) Virginia Tech (3) Charleston (3) Wagner	W, 2-1 (8) W, 5-4 W, 6-2
26	(3) Lipscomb	L, 0-2
MARCH		
3	(4) Northwestern State (4) Southern	L, 1-3 W, 9-0 (5)
4	(4) Northwestern State (4) Southern	W, 8-3 W, 8-2
7	STEPHEN F. AUSTIN	W, 5-4 (8)
10	*at South Alabama (DH)	L, 1-2 (9) L, 2-7 L, 1-9 (6)
11	*at South Alabama	L, 1-9 (6)
14	*TROY (DH)	L, 3-4 W, 2-1 (8)
15	*TROY	W, 5-3
24	*at Middle Tennessee (DH)	L, 0-4 L, 4-6 W, 8-2
25	*at Middle Tennessee	W, 8-2
28	at Nicholls State	W, 7-4
APRIL		
6	*at FIU (DH)	L, 0-8 (5) L, 5-8
7	*at FIU	L, 0-4
11	at Central Arkansas	L, 0-5
12	at Memphis	L, 1-6
14	*NORTH TEXAS (DH)	W, 2-1 W, 2-1 L, 1-4
15	*NORTH TEXAS	L, 1-4
18	JACKSON STATE	W, 5-2
19	Stephen F. Austin	W, 3-1
21	*WESTERN KENTUCKY (DH)	L, 1-4 L, 1-4
22	*WESTERN KENTUCKY	W, 1-0
24	*FLORIDA ATLANTIC (DH)	W, 8-3 W, 4-3
25	*FLORIDA ATLANTIC	L, 3-6
MAY		
5	*at No. 5 UL-Lafayette (DH)	W, 4-2 L, 3-8
6	*at No. 5 UL-Lafayette	L, 4-11
9	(5) Sun Belt Tournament	TBA
10	(5) Sun Belt Tournament	TBA
11	(5) Sun Belt Tournament	TBA
12	(5) Sun Belt Tournament	TBA
18	NCAA Regionals	TBA
19	NCAA Regionals	TBA
20	NCAA Regionals	TBA
25	NCAA Super Regional	TBA
26	NCAA Super Regional	TBA
27	NCAA Super Regional	TBA
31	College World Series	TBA
JUNE		
1-6	College World Series	TBA

Home games in **BOLD CAPS**
*Sun Belt Conference Match
(DH) - Double Header

Tournament Legend

- (1) ULM Mardi Gras Classic (Monroe, La.)
- (2) Houston Hilton Plaza Invitational (Houston, Texas)
- (3) College of Charleston Cougar Classic (Charleston, S.C.)
- (4) Northwestern State Demon Invitational (Natchitoches, La.)
- (5) Sun Belt Tournament (Boca Raton, Fla.)



ULM WARHAWKS

2012 Record..... 24-24
SBC Record..... 9-15
Last Week..... 1-2

All-Time vs. UL-Lafayette..... 27-89
All-Time vs. South Alabama..... 5-14
All-Time vs. FIU..... 5-15
All-Time vs. Noth Texas..... 18-18
All-Time vs. Western Kentucky..... 6-13
All-Time vs. Troy..... 6-15
All-Time vs. Florida Atlantic..... 6-12



No. 1 UL-Lafayette

2012 Record..... 46-3
Sun Belt Record..... 21-3
Last Week..... 2-1



No. 2 South Alabama

2012 Record..... 35-15
Sun Belt Record..... 17-7
Last Week..... 2-0



No. 3 FIU

2012 Record..... 27-25
Sun Belt Record..... 15-9
Last Week..... 2-0



No. 4 North Texas

2012 Record..... 26-24-1
Sun Belt Record..... 15-5-1
Last Week..... 3-0



No. 5 Western Kentucky

2012 Record..... 31-23-1
Sun Belt Record..... 11-12-1
Last Week..... 3-0



No. 6 Troy

2012 Record..... 31-22
Sun Belt Record..... 10-14
Last Week..... 0-2



No. 8 Florida Atlantic

2012 Record..... 15-36
Sun Belt Record..... 5-17
Last Week..... 0-2

May 9-12 • FAU Stadium

Live Webstream..... ulmwarhawks.com
Live Stats ulmwarhawks.com
Facebook www.facebook.com/ulmwarhawks
Twitter @ulmwarhawks

ULM SUN BELT TOURNAMENT QUICK FACTS

This is the fifth time straight ULM competes for the Sun Belt Conference Championship over six seasons since joining the league in 2007. It will be the second consecutive year it faces South Alabama in the first round.

The Sun Belt Conference tournament will continue the same double elimination format it has used over the past few seasons. The Warhawks have only been eliminated after its first two games once, in 2011.

The Warhawks own a 6-7 record all-time in the Sun Belt Conference Championship.

As the No. 7 seed ULM holds a 5-3 record. This is the third time it has drawn the No. 7 seed in five years of traveling to the tournament, and has made a run both times it entered seventh overall.

In every tournament but last year's, ULM has won its first game. This includes upsets of the defending tournament champions Florida Atlantic in 2008 and UL-Lafayette in 2009.

ULM has a history as an upset squad. It made its way to the 2008 tournament final as the No. 7 seed where it eventually fell to UL-Lafayette, and also upset the Ragin' Cajuns in the first round of the 2009 tournament.

Last year, South Alabama run-ruled ULM 10-2 in the opening game of the championship. This will be the second time in history both programs go head-to-head in the post season.

PROJECTED LINEUP

Pos.	No.	Name	Yr.	B/T	AVG	R	RBI	HR	SB-A	Notes
C	13	Roxy Cassel	Sr.	R/R	.227	15	20	2	4-5	31 BB, 99 career RBIs
1B	16	Janel Salanoa	Jr.	R/R	.308	21	23	3	16-17	1 3B, 6 2B, 58 TB
2B	7	Miyuki Navarrete	So.	R/R	.301	27	18	3	28-30	8 2B, 2 SF, 5 SH
3B	22	Alexis Cacioppo	Fr.	R/R	.274	26	25	6	5-7	7 2B, 62 TB, .459 slg %
SS	21	Kayla Boening	Fr.	L/R	.209	13	10	0	11-18	2 3B, 17 BB
LF	3	Elena DiMattia	Jr.	L/R	.198	12	3	0	6-8	8 BB, 5 SH
CF	4	Mackenzie Miller	Fr.	R/R	.209	16	10	0	10-10	8 2B, 31 TB, 5 SH
RF	18	Haley McCall	Jr.	R/R	.228	15	17	1	12-13	13 2B, 1 3B, 49 TB
DP	10	Charlotte Pastor	Jr.	L/R	.224	15	6	0	5-6	1 2B, 27 TB

Starting Pitchers

Pos.	No.	Name	Yr.	W-L	CG	IP	ERA	SO	ER	Notes
RHP	9	Samantha Hamby	Jr.	7-5	6	84.0	3.25	51	39	17 GS, 74 H, 2 SHO
RHP	14	Haylie Wilson	Fr.	13-7	12	136.1	3.54	64	69	16 GS, 32 APP, 33 BB
RHP	12	Stephanie Routzon	So.	4-9	4	73.1	4.01	32	42	14 GS, 18 APP, 31 BB

Media Relations

ULM MEDIA RELATIONS CONTACT

Rachel Williams
office: (318) 342-5461
cell: (386) 852-0349
fax: (318) 342-5464
email: willliart@warhawks.ulm.edu

POSTGAME INTERVIEWS -- will be conducted at a designated location following a NCAA mandated 10-minute cooling-off period. ULM head coach Rosemary Holloway-Hill and selected players will be made available for interviews upon request. Media requests (at home) and for both ULM and opposing coaches and players should be made to the ULM softball SID. Opponent requests will be forwarded to the visiting SID. The Warhawk softball locker room is closed to the media.

INTERVIEWS DURING THE WEEK -- All interview requests must be arranged through Rachel Williams in the ULM Media Relations Office. Please contact Rachel Williams to arrange interviews during the week. Practice is closed, but arrangements can be made in advance if you are planning on shooting B-roll footage. Coach Holloway-Hill and ULM student-athletes are available for interviews on non-game days following practice or through special arrangements with Rachel Williams.

ULMWARHAWKS.COM -- All the latest scores, statistics and player information is available by accessing the softball section at ulmwarhawks.com. Game stories, previews, statistics, game notes and advisories will be sent to interested media via e-mail. Live stats for ULM fans are also available online at ulmwarhawks.com.

ADDITIONAL SERVICES -- In an effort to serve members of the media, the ULM Media Relations Office will, within reason and to the best of its ability, service all requests. Photographs of student-athletes or coaches will be made available for print or online media outlets unable to shoot a Warhawk basketball game. Photo credits must always read "Photograph courtesy of ulmwarhawks.com."

RADIO -- All radio stations wishing to broadcast the ULM Softball Complex should contact the ULM Media Relations Office at least one week prior to the event. Space will be provided for the official radio station of the visiting team; others will be accommodated as space permits. Phone lines must be arranged for all stations in advance.

GAME NOTES -- Media members can receive the Warhawk Softball game notes via e-mail by contacting Rachel Williams.

WE ARE THE ULM WARHAWKS -- We are ULM. In all references to Warhawk athletics, please use the acronym 'ULM'. The only other acceptable version is the full name of the institution, the University of Louisiana at Monroe. Any other reference, including Louisiana-Monroe, La.-Monroe, UL-Monroe, LMU, or simply Monroe are inaccurate. Refer to all ULM athletic teams as Warhawks including all women's teams. Lady Warhawks or Lady Hawks is not acceptable. Individual players may be referred to as a Warhawk.

805-976-3

Head coach Rosemary Holloway-Hill's overall career record as a head coach. She won her 800th against Jackson State on Apr. 18

704-895-3

Holloway-Hill's mark as head coach at ULM. She secured her 700th win Apr. 19 at Stephen F. Austin

17th

What Miyuki Navarrete ranks in the NCAA in stolen bases per game (0.60)

18

Number of hits ULM compiled over the ULL series - the second most hits the Ragin' Cajuns gave up in a Sun Belt series this season

6

How many places Miyuki Navarrete jumped nationally in stolen bases after collecting three against ULL. She has improved each week for four straight weeks

5th

Where the Warhawks rank nationally in stolen bases per game (2.13)

8

Consecutive weeks the Warhawks have ranked in the top-6 in the nation in stolen bases

3

Statistical categories the Warhawks improved in the Sun Belt after ULL series (runs, walks, home runs)

2

Warhawk pitchers, Samantha Hamby and Stephanie Routzon, rank in the top-four in four different categories (hits, runs, earned runs and home runs)

20

The only bases not stolen in 123 attempts this season - Warhawks total 103

7

Different categories a ULM player ranks first in the Sun Belt, including Miyuki Navarrete (stolen bases and attempts), Haylie Wilson (games finished and in relief), Samantha Hamby (home runs allowed and doubles allowed) and Haley McCall (doubles)

2012 Quick Facts

UNIVERSITY

Location	Monroe, La.
Founded	1931
Enrollment	8,858
Nickname	Warhawks
Colors	Maroon and Gold
Mascot	Ace
Conference	Sun Belt
President	Dr. Nick J. Bruno
AD	Bobby Staub
SWA	Tasha Tisher
Athletics Phone	(318) 342-3ULM
Web Site	ulmwarhawks.com

COACHING STAFF

Head Coach	Rosemary Holloway-Hill
Alma Mater	Oral Roberts, '77
Record at ULM (Seasons)	704-895-3 (28)
Associate Head Coach	Sara Vogt
Alma Mater	Indiana, '03
Years at ULM	Fourth Season
Graduate Assistant	Paige Cassady
Alma Mater	FIU, '10
Years at ULM	Second Season

TEAM INFORMATION

2011 Record	27-28
2011 Sun Belt Finish	10-14 (6th)
2011 Sun Belt Tournament Finish	First round
2011 Postseason	didn't qualify
Letterwinners Returning/Lost	8/10
Starters Returning/Lost	4/5
Pitchers Returning/Lost	2/2
Newcomers	8

FACILITY INFORMATION

Venue	ULM Softball Complex
Capacity	500
Dimensions (L-R)	200-210-220-210-200
Press Box Number	n/a

PROGRAM HISTORY

All-Time Record (Percentage)	869-1058-5 (.450)
NCAA Tournament Appearances	1
Years	1997
NCAA Tournament Record	1-2

SUN BELT HISTORY

All-Time SBC Record (Percentage)	53-93 (.363)
Sun Belt Tournament Appearances	4

By The Numbers

ULM	USA	
24-24	Record	35-15
.246	Batting Avg.	.276
3.63	Runs/Game	4.66
6.27	Hits/Game	7.16
55	Doubles	65
6	Triples	7
17	Home Runs	35
142	RBIs	209
103-123	Stolen Bases	50-59
3.73	ERA	1.92
0.51	K/IP	0.92
1.20	K/BB	3.22
0.42	BB/IP	0.28
.963	Fielding %	.977

2012 Sun Belt Conference Standings (as of 5/8/12)

Team	Conference				Overall				Streak
	W	L	T	Pct.	W	L	T	Pct.	
UL-Lafayette	21	3	-	.875	46	3	-	.939	W2
South Alabama	17	7	-	.708	35	15	-	.700	W4
FIU	15	9	-	.625	27	25	-	.519	W2
North Texas	13	10	1	.563	26	24	1	.511	W6
Western Kentucky	11	12	1	.479	31	23	1	.573	W2
Troy	10	14	-	.417	31	22	-	.585	L5
ULM	9	15	-	.375	24	24	-	.500	L2
Florida Atlantic	5	18	-	.217	15	37	-	.288	L2
Middle Tennessee	5	18	-	.217	16	33	-	.327	L2

ULM KNOCKS OFF NO. 5 UL-LAFAYETTE

ULM started the series against in-state rival No. 5 UL-Lafayette with a bang by handing it just its third loss of the 2012 season on May 5. The win snapped ULL's 39 game home winning streak and ended their overall wins streak at 10-consecutive. The Warhawks' upset also shut down freshman pitcher Jordan Wallace's undefeated run at 23-straight, which set an NCAA record. It was ULM's first win against a ranked team since May 3, 2008, which also came against the Ragin' Cajuns.

700/800 MARK FOR HOLLOWAY-HILL

Head coach Rosemary Holloway-Hill reached two career milestones two weeks ago. Holloway-Hill picked up her 700th win as head coach at ULM on Apr. 19 with a thrilling 3-1 eight inning victory on the road against Stephen F. Austin. The day before, she also collected her 800th career win as a head coach with a 5-2 triumph over Jackson State at home Apr. 18.

ACC WIN

ULM had a huge victory at the College of Charleston Cougar Classic Feb. 25 when it took down Virginia Tech 2-1 in eight innings. The win marked the first over an Atlantic Coast Conference member in the history of the program, ending a 12-game losing streak to ACC schools. The Warhawks entered the contest with a 0-12-1 record all-time against ACC opponents, including a 0-1 record against the Hokies.

CASSEL IN RECORD BOOKS

Roxy Cassel's 4 RBIs in the Mardi Gras Classic put her over the edge in ULM program history. Since then, the senior has totaled 95 RBIs for her career for a solo fifth place after entering 2012 tied in fifth with 79. She needs 26 more to overtake phenom Brianna Love in fourth place.

SALANOA PRESEASON SELECTION

ULM's Janel Salanoa was picked as a preseason selection for the College Sports Madness Sun Belt Preseason Team, the first honor of her career. Salanoa is the strongest returner for the Warhawks this season after averaging .321 at bat with 11 doubles, seven home runs and a .537 slugging percentage. She ranked eighth in the nation with four sacrifice flies, setting a ULM single-season record while striking out just five times in 168 at bats to rank 17th nationally.

RETURNING OFFENSIVE POWER

The 2011 ULM squad was one the highest offensive outputting squads in program history, and set a single-season record for runs with 264. The Warhawks return three of the most dominant batters, including Janel Salanoa with the top returning batting average of .321. Salanoa and Miyuki Navarrete each had 33 runs and Roxy Cassel had 25, accounting for more than a third of the team's runs.

NATIONAL CHAMPIONS

From Bengals to Warhawks, ULM welcomed two members of the NJCAA Division II National Championship winning team LSU-Eunice. Third baseman Haley McCall and outfielder Karli Wainwright were both key to the Bengals' success, as McCall was named the MVP of the national championship game and a NJCAA All-American while Wainwright was a first team all-region and all-conference pick.

ULM PICKED EIGHTH IN SBC

The ULM softball team was picked to finish eighth in the 2012 Sun Belt Conference Pre-season Poll. The Warhawks received 26 votes from the league's nine head coaches. Defending champion UL-Lafayette was selected to repeat their championship after collecting 80 points and all but one first place vote.

2011 RECAP

The Warhawks finished 2011 with its winnigest season since 2006, going 27-28 overall and 10-14 in SBC play. ULM's 27 wins are the most since it went 27-30 in 2006, the last season it was a member of the Southland Conference. It also marked the fourth 20-win season for the Warhawks and the most league wins since joining the Sun Belt in 2007.

WARHAWKS SIGN FIVE FOR 2013

Head coach Rosemary Holloway-Hill landed five impressive recruits during the Early Signing Period for the 2013 season. All have a teammate joining them, as three hail from the 2011 Class 5A Louisiana State Championship team Hanville HS in Boutte, La., and two come from defending national champions The Woodlands in The Woodlands, Texas.

Amy Barre landed on the all-district team all three seasons including a first team distinction in 2011 playing for Hahnville HS. She was named an all-state honorable mention this past year after collecting a team-best 34 RBIs with a .403 batting average. In 102 at-bats she only struck out four times, which also earned her a Louisiana Sports Writer's Association all-state honorable mention nod.

Faith Bohack was named to the second team all-state last season and made the all-state tournament team after The Woodlands won the state championship. She had a .425 batting average in 2011 and collected seven home runs, five triples, 12 doubles and 62 runs while driving in 57 runners. She is also a three-time first team all-district selection.

Courtney Dutreix earned all-state accolades the past two seasons, including a first team pick for both the Louisiana Sports Writer's Association and the Louisiana Softball Coaches Association in 2011. She has also been named to the all-metro and all-district teams for three years running and holds the school record for most hits in a single season.

Hope Mair earned a first team all-district distinction for the past three seasons, and in 2011 earned the honor playing in right field. The native of Des Allemande, La., ended her junior season with 22 runs, 22 RBIs, two homeruns, a .351 batting average and a .526 slugging percentage.

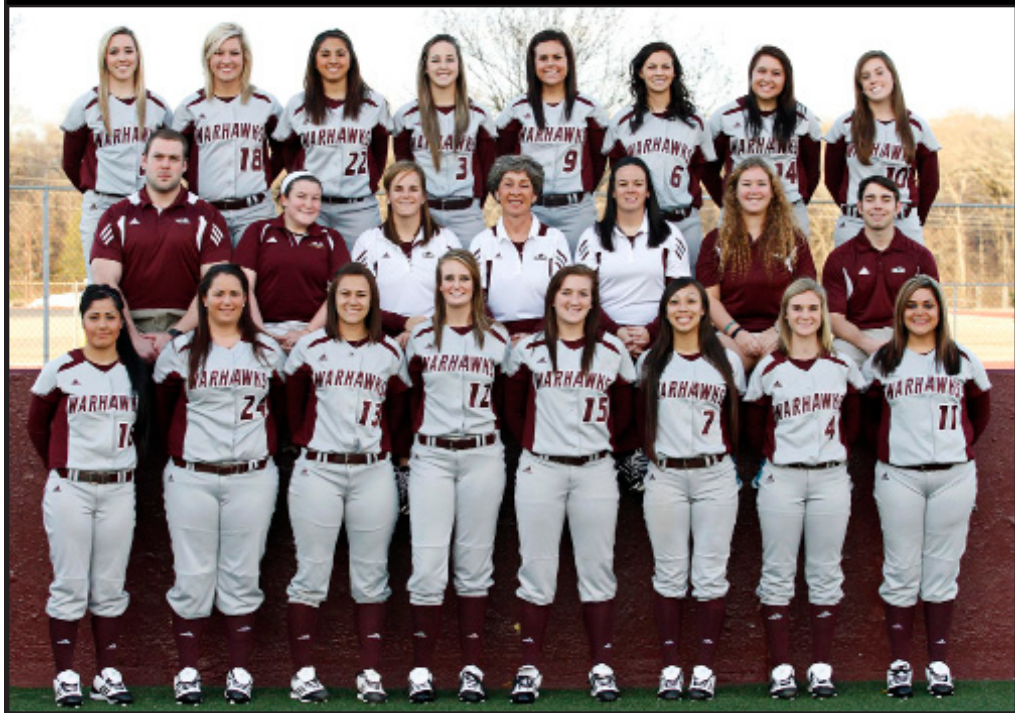
Kayla Prater is a two-time all-state selection after being named to the second team in 2011 an honorable mention in 2010. She is also a back-to-back all-district pick her sophomore and junior campaigns including landing on the first team last year. The catcher collected 39 hits and 26 runs in 2011 along with 18 RBIs in 119 at-bats for a .328 batting average.

2012 Sun Belt Rankings

(as of 5/8/12)

OFFENSIVE	RANK
Stolen Bases (103)	1st
Runs (174)	7th
Triples (6)	T7th
Walks (138)	5th
Doubles (55)	6th
Batting Average (.246)	8th
Hits (301)	9th
RBIs (140)	9th
Home Runs (17)	T8th
PITCHING/DEFENSIVE	RANK
ERA (3.73)	7th
Opposing Batting Average (.287)	7th
Hits (365)	6th
Runs (204)	T6th
Earned Runs (168)	7th
Strikeouts (160)	8th
Walks (133)	5th
Fielding Percentage (.963)	4th
Errors (51)	6th
INDIVIDUALS	RANK
Karli Wainwright	
Triples (2)	T8th
Kayla Boening	
Steal Attempts (18)	8th
Triples (2)	T8th
Roxy Cassel	
Walks (31)	4th
Miyuki Navarrete	
Stolen Bases (28)	1st
Steal Attempts (30)	1st
Sac Flies (2)	T7th
Haley McCall	
Doubles (13)	T1st
Janel Salanoa	
Stolen Bases (16)	T8th
Steal Attempts (17)	T9th
Stephanie Routzon	
Losses (9)	T10th
Hits Allowed (92)	4th
Runs Allowed (53)	3rd
Earned Runs Allowed (42)	T4th
Home Runs Allowed (5)	T2nd
Walks Allowed (31)	4th
Doubles Allowed (18)	10th
Triples Allowed (2)	T7th
Samantha Hamby	
Home Runs Allowed (4)	1st
Doubles Allowed (10)	T1st
Hits Allowed (74)	2nd
Runs Allowed (48)	3rd
Earned Runs Allowed (39)	3rd
Triples Allowed (2)	T7th
Opposing Batting Average (.241)	9th
Batters Struck Out Looking (27)	T10th
Haylie Wilson	
Games Finished (14)	1st
Games in Relief (16)	1st
Innings Pitched (136.1)	10th
Triples Allowed (1)	T4th
Appearances (32)	T4th
Wins (13)	T7th
Walks Allowed (33)	5th

2012 ULM Softball Team



BY CLASS

Seniors..... Roxy Cassel
 Jessica Chastka
 Katie Girardi
 Juniors Elena DiMattia
 Samantha Hamby
 Haley McCall
 Charlotte Pastor
 Janel Salanoa
 Karli Wainwright
 Sophomores..... Miyuki Navarrete
 Stephanie Routzon
 Freshmen..... Kayla Boening
 Alexis Cacioppo
 Mackenzie Miller
 Haylie Wilson

BY POSITION

C..... Roxy Cassel
 Katie Girardi
 IF..... Alexis Cacioppo
 Katie Girardi
 Haley McCall
 Miyuki Navarrete
 Charlotte Pastor
 Stephanie Routzon
 Janel Salanoa
 OF..... Elena DiMattia
 Karli Wainwright
 P..... Jessica Chastka
 Samantha Hamby
 Stephanie Routzon
 Haylie Wilson
 UT..... Kayla Boening
 Mackenzie Miller
 DP..... Roxy Cassel
 Janel Salanoa

BY STATE

California Alexis Cacioppo
 Miyuki Navarrete
 Janel Salanoa
 Colorado Mackenzie Miller
 Stephanie Routzon
 Florida..... Katie Girardi
 Haylie Wilson
 Louisiana..... Elena DiMattia
 Samantha Hamby
 Haley McCall
 Charlotte Pastor
 Karli Wainwright
 Texas..... Kayla Boening
 Roxy Cassel
 Jessica Chastka

No.	Player	Pos.	B/T	Ht.	Yr.	Hometown(Previous School)
3	Elena DiMattia	OF	L/R	5-4	Jr.	Sunset, La. (Beau Chene HS)
4	Mackenzie Miller	UT	R/R	5-6	Fr.	Evergreen, Colo. (Conifer HS)
6	Karli Wainwright	OF	L/R	5-4	Jr.	Lake Charles, La. (LSU-Eunice)
7	Miyuki Navarrete	IF	R/R	5-6	So.	San Jose, Calif. (Archbishop Mitty HS)
9	Samantha Hamby	P	R/R	5-7	Jr.	Monroe, La. (Central Alabama CC)
10	Charlotte Pastor	IF	L/R	5-3	Jr.	Metairie, La. (St. Mary's Dominican HS)
12	Stephanie Routzon	P/IF	R/R	6-0	So.	Wheat Ridge, Colo. (Wheat Ridge HS)
13	Roxy Cassel	C/DP	R/R	5-8	Sr.	Deer Park, Texas (Deer Park HS)
14	Haylie Wilson	P	R/R	5-3	Fr.	Middleburg, Fla. (The Bolles School)
15	Jessica Chastka	P	R/R	5-8	Sr.	College Station, Texas (A&M Consolidated HS)
16	Janel Salanoa	IF	R/R	5-5	Jr.	San Jose, Calif. (Evergreen Valley HS)
18	Haley McCall	IF	R/R	5-6	Jr.	Grand Chenier, La. (LSU-Eunice)
21	Kayla Boening	UT	L/R	5-4	Fr.	San Antonio, Texas (Poth HS)
22	Alexis Cacioppo	IF	R/R	5-5	Fr.	La Habra, Calif. (Sonora HS)
24	Katie Girardi	IF/C	R/R	5-8	Sr.	Pembroke Pines, Fla. (McArthur HS)

COACHING STAFF

Head Coach: Rosemary Holloway-Hill, 28th Season (Oral Roberts, '77)
 Assistant Coach: Sara Vogt, Fourth Season (Indiana, '03)
 Graduate Assistant Coach: Paige Cassady, Second Season (FIU, '10)

PRONUNCIATIONS

Kayla **Boening**..... BANE-ing
 Alexis **Cacioppo** cass-e-o-po
 Jessica **Chastka** chas-t-ka
 Elena **DiMattia** de-matt-e-ah

Miyuki Navarrete.....me-you-key na-va-rhet
 Stephanie **Routzon**..... ROUTE-zun
 Janel **Salanoa** sal-A-noah
 Sara **Vogt** vote

ULM's Record When...

OVERALL	24-24
NON-CONFERENCE	15-9
LOUISIANA TEAMS	8-5
SUN BELT	9-15
VS. TOP 25	1-4
DAY GAMES	17-19
NIGHT GAMES	7-5
HOME	12-6
AWAY	7-15
NEUTRAL	5-3
FEBRUARY	8-6
MARCH	8-7
APRIL	7-9
MAY	1-2
SUNDAY	5-7
MONDAY	-
TUESDAY	2-0
WEDNESDAY	5-1
THURSDAY	2-0
FRIDAY	1-3
SATURDAY	9-10
SHUTOUTS	3-8
RUN-RULE GAMES	3-4
EXTRA-INNING GAMES	6-1
ONE-RUN GAMES	10-2
TWO-RUN GAMES	3-4
FIVE-RUN + GAMES	7-10
SCORED FIRST	11-7
OPPONENT SCORED FIRST	13-17
SCORED IN 1st INNING	9-7
OPPONENT SCORED IN 1st INNING	6-10
SCORED 0-2 RUNS	5-16
SCORED 3-5 RUNS	7-8
SCORED 6-9 RUNS	10-0
SCORED 10 + RUNS	2-0
OPPONENT SCORED 0-2 RUNS	14-3
OPPONENT SCORED 3-5 RUNS	8-8
OPPONENT SCORED 6-9 RUNS	2-10
OPPONENT SCORED 10 + RUNS	0-9
OUT-HIT OPPONENT	13-1
OUT-HIT BY OPPONENT	8-21
HITS ARE TIED	3-2
MADE 0 ERRORS	9-7
MADE 1 ERRORS	12-10
MADE 2+ ERRORS	3-7
OPPONENT MADE 0 ERRORS	5-12
OPPONENT MADE 1 ERROR	7-8
OPPONENT MADE 2+ ERRORS	12-4
HIT 0 HOME RUNS	14-20
HIT 1 HOME RUN	9-2
HIT 2+ HOME RUNS	1-2
AFTER 4 LEADING	11-0
AFTER 4 TRAILING	5-20
AFTER 4 TIED	8-4
AFTER 5 LEADING	15-0
AFTER 5 TRAILING	3-19
AFTER 5 TIED	4-1
AFTER 6 LEADING	15-0
AFTER 6 TRAILING	2-17
AFTER 6 TIED	4-2

Head Coach Rosemary Holloway-Hill



With 27 years in the dugout for the ULM softball team, Rosemary Holloway-Hill enters the 2012 season as the longest tenured of all the current Warhawks head coaches. The dean of the ULM coaching family, Holloway-Hill enters her 28th season as softball skipper with more victories than any head coach in any sport in Warhawks history.

At the start of the 2012 season Holloway-Hill has led the Warhawks to 680 wins, three conference championships and two postseason appearances. Her 680 victories rank 33rd among all NCAA active coaches as well as 52nd all-time as a Division I head coach. In the fall of 2009 she was honored at the National Fastpitch Coaches Association after reaching her 700th career coaching victory, which now totals 760 wins over 33 years as a head coach.

Holloway-Hill has coached many of the softball program's most successful players, including ULM's only All-American Sarah Dawson. Dawson owns every career pitching record at ULM including winning percentage (.681), wins (120) and ERA (0.69). Holloway-Hill also guided two of the program's most accomplished hitters, Lori Tande-Bruscato and three-time NFCA All-South Region selection Brianna Love. In 2011 Love ended her career by breaking many records previously held by Tande-Bruscato, including single-season home runs (16), total home runs (45), runs scored (165) and career batting average (.360). Tande-Bruscato currently holds the all-time records for doubles (49), hits (242), total bases (501) and most at-bats (706).

In 2011 Holloway-Hill led ULM to its fourth-straight appearance at the Sun Belt Conference Tournament after finishing sixth place in the regular season, the highest result since joining the league in 2007. The team's 27-28 record is the best since the Warhawks' final season in the Southland Conference in 2006 and picked up a program-best 10 Sun Belt wins. She has continued to push the Warhawks to their full potential with a competitive schedule in 2011 that included five ranked teams and softball powerhouses Tennessee and Oklahoma.

In addition to producing talented and winning teams on the diamond, Holloway-Hill has stressed that her student athletes enjoy a balanced collegiate experience. Community service and academics have been fundamental values within the Warhawks' softball program thanks to the emphasis Holloway-Hill has placed on them. Since becoming head coach, 25 players have been named National Fastpitch Coaches Association All-America Scholar Athletes. The Warhawks landed in the top-50 in the nation in cumulative GPA in 2010 and 2011 including 47th with a 3.279 average last season, which ranked second in the Sun Belt and was the top program in the state of Louisiana.

The longtime mentor of the ULM softball program, Holloway-Hill has constantly challenged her teams by playing some of the top talent in the nation. The 2007 season brought new challenges as the Warhawks played their first season in the highly competitive Sun Belt Conference. Despite finishing ninth in the league in its inaugural campaign, ULM once again finished with a winning record at home and tallied victories over the league's top three teams.

As good as ULM has been in the classroom under Holloway-Hill, they have been even better on the field. In addition to having the most wins in ULM history, her 238 victories from the program's days in the Southland Conference were the most by any school in that league. Holloway-Hill posted her 200th-career win against an SLC squad in a 5-2 decision over McNeese State on April 21, 2001.

Following the 2004 season, the NFCA recognized ULM's achievements on the softball field when its All-Time Top 50 poll was released. ULM was ranked No. 43 amongst the more than 250 Division I softball programs in the nation, the highest in the Southland Conference and the third highest amongst all the schools in the state of Louisiana. The top 50 ranking was compiled using weekly USA Today/NFCA polls from 1995 through 2003.

Holloway-Hill came to what was then Northeast Louisiana University in 1984 as an assistant coach to Mary Jo Murray before becoming the program's fifth head coach the following season. She promptly guided the Warhawks to the Southland Conference Tournament championship - the university's first - in her first season as head coach in 1985. Her 1986 squad also claimed the tournament title.

In 1992, ULM finished in second in the conference race but the team's record against a strong schedule - a trademark of a Holloway-Hill team - earned it the chance to compete in the National Invitational Championships in Macomb, Ill., a tournament for leading teams which did not make the NCAA playoffs. ULM won the tournament with a 6-1 record, defeating Ivy League champion Princeton in the finals, 3-0.

Holloway-Hill's greatest team came five years later. The 1997 edition, led by All-American pitcher Sarah Dawson, won the Southland Conference championship, posted a 47-12 record, was ranked No. 18 in the nation, and competed in the NCAA tournament before being defeated by eventual national runner-up UCLA.

Following the 1997 season, Holloway-Hill garnered numerous coaching honors. She was named Southland Conference Coach of the Year by her peers in the coaching ranks, Louisiana Coach of the Year by the Louisiana Sports Writers Association, and South Region Coach of the Year by the NFCA.

In addition to coaching at ULM, Holloway-Hill has coached Athletes in Action teams. She was an assistant on a 1986 AIA team that toured Western Europe and was head coach of a 1987 squad that toured South America. In 1990, she traveled to Spain as head coach of an AIA team and conducted clinics in Barcelona.

A native of Skiatook, Okla., Holloway-Hill was a star athlete at Northeastern Oklahoma A&M Junior College, becoming the first woman to letter in four sports at the school - basketball, volleyball, tennis and cross country. While there she lettered on the men's cross country team.

Holloway-Hill earned a bachelor's degree in physical education at Oral Roberts in 1977. She was also a member of the first USA korfbal (a Dutch form of basketball) team and conducted clinics and tournaments in Holland her senior year at ORU.

After graduation, Holloway-Hill became coach at Cloud County Community College in Concordia, Kan., and helped turn around its softball program. While at Cloud County, Holloway-Hill's teams captured three state championships in four years.

In addition to being the softball head coach, Holloway-Hill also coached volleyball during the beginning of her ULM career from 1984-93. With 159 career victories on the volleyball court, Holloway-Hill is that program's all-time winningest coach and has been responsible for all five of the school's winning seasons. The ULM volleyball program enjoyed its best season under Holloway-Hill's direction, finishing third in the Southland Conference at 30-25 the same season that the softball team advanced to the league's tournament championship game.

HOME RUNS THIS SEASON

No.	Date	Opp.	Batter	Inning	ROB	Count	Note
17.	05/06	at UL-Lafayette	Navarrete (3)	5th	0	2-2	
16.	05/06	at UL-Lafayette	Cassel (2)	1st	2	3-2	
15.	05/05	at UL-Lafayette	Cacioppo (6)	6th	1	0-0	
14.	04/19	at Stephen F. Austin	Cacioppo (5)	7th	0	2-0	LO
13.	04/18	Jackson State	Girardi (2)	5th	2	3-2	
12.	04/06	at FIU	Girardi (1)	6th	2	0-0	
11.	04/06	at FIU	Navarrete (2)	1st	0	0-0	LO
10.	03/28	at Middle Tennessee	Salanoa (4)	5th	1	-	
9.	03/25	vs. Troy	McCall (1)	6th	2	2-2	
8.	03/10	at South Alabama	Cacioppo (4)	1st	1	2-1	In Park
7.	03/10	at South Alabama	Salanoa (2)	6th	0	3-1	
6.	03/04	vs. Southern	Navarrete (1)	6th	0	1-0	
5.	02/25	vs. Wagner	Salanoa (1)	5th	1	1-1	
4.	02/25	vs. Wagner	Cacioppo (3)	4th	0	0-0	LO
3.	02/22	at Samford	Cacioppo (2)	3rd	0	0-1	
2.	02/12	Grambling State	Cacioppo (1)	4th	0	3-2	LO
1.	02/10	SIU-Edwardsville	Cassel (1)	7th	1	1-2	

2012 Results

DATE	OPPONENT	RESULT	ULM R/H/E	OPP R/H/E	RECORD	SUN BELT	PITCHER OF RECORD	ATT	TIME
Feb. 10	(1) SIU-Edwardsville	W, 7-6 (9)	7-8-4	6-9-2	1-0	0-0	Hamby (W, 1-0)	358	2:25
Feb. 10	(1) IUPUI	L, 3-11 (5)	3-3-0	11-10-0	1-1	0-0	Wilson (L, 0-1)	358	2:00
Feb. 11	(1) Northwestern State	W, 10-0 (6)	10-11-1	0-2-0	2-1	0-0	Hamby (W, 2-0)	303	2:19
Feb. 11	(1) Southeast Missouri State	L, 4-8	4-6-4	8-8-2	2-2	0-0	Routzon (L, 0-1)	303	1:58
Feb. 12	(1) Grambling State	W, 12-3 (5)	12-15-1	3-8-5	3-2	0-0	Wilson (W, 1-1)	386	1:58
Feb. 18	(2) vs. McNeese State	W, 6-2	6-5-1	2-7-2	4-2	0-0	Routzon (W, 1-1)	287	1:57
Feb. 18	(2) at No. 17 Houston	L, 0-9 (5)	0-0-1	9-12-1	4-3	0-0	Hamby (L, 2-1)	486	1:38
Feb. 19	(2) vs. McNeese State	L, 0-2	0-2-1	2-4-3	4-4	0-0	Hamby (L, 2-2)	339	1:50
Feb. 19	(2) at No. 17 Houston	L, 0-13 (5)	0-4-3	13-13-0	4-5	0-0	Routzon (L, 1-2)	521	1:34
Feb. 22	at Samford	W, 7-6 (8)	7-12-1	6-9-4	5-5	0-0	Wilson (W, 2-1)	114	2:20
Feb. 25	(3) vs. Virginia Tech	W, 2-1 (8)	2-1-2	1-7-0	6-5	0-0	Routzon (W, 2-2)	89	1:54
Feb. 25	(3) at Charleston	W, 5-4	5-6-1	4-8-2	7-5	0-0	Wilson (W, 3-1)	210	2:08
Feb. 25	(3) vs. Wagner	W, 6-2	6-7-0	2-7-1	8-5	0-0	Wilson (W, 4-1)	88	1:45
Feb. 26	(3) vs. Lipscomb	L, 0-2	0-3-0	2-7-0	8-6	0-0	Routzon (L, 2-3)	78	1:50
Mar. 3	(4) at Northwestern State	L, 1-3	1-4-1	3-9-3	8-7	0-0	Routzon (L, 2-4)	127	1:52
Mar. 3	(4) vs. Southern	W, 9-0 (5)	9-11-0	0-4-4	9-7	0-0	Hamby (W, 3-2)	87	1:06
Mar. 4	(4) at Northwestern State	W, 8-3	8-8-1	3-8-1	10-7	0-0	Wilson (W, 5-1)	146	2:02
Mar. 4	(4) vs. Southern	W, 8-2	8-12-1	2-4-2	11-7	0-0	Routzon (W, 3-4)	131	1:36
Mar. 7	Stephen F. Austin	W, 5-4 (8)	5-9-0	4-6-1	12-7	0-0	Wilson (W, 6-1)	130	2:36
Mar. 10	*at South Alabama	L, 2-1 (9)	1-8-1	2-7-1	12-8	0-1	Routzon (L, 3-5)	354	2:42
Mar. 10	*at South Alabama	L, 2-7	2-5-1	7-9-0	12-9	0-2	Wilson (L, 6-2)	326	1:47
Mar. 11	*at South Alabama	L, 1-9 (6)	1-4-0	9-12-1	12-10	0-3	Routzon (L, 3-6)	355	1:55
Mar. 14	*Troy	L, 3-4	3-8-3	4-8-0	12-11	0-4	Routzon (L, 3-7)	251	2:11
Mar. 14	*Troy	W, 2-1 (8)	2-9-0	1-3-1	13-11	1-4	Hamby (W, 4-2)	243	1:59
Mar. 15	*Troy	W, 5-3	5-5-1	3-2-0	14-11	2-4	Wilson (W, 7-2)	176	2:01
Mar. 24	*at Middle Tennessee	L, 0-4	0-6-1	4-8-0	14-12	2-5	Routzon (L, 3-8)	183	1:47
Mar. 25	*at Middle Tennessee	L, 4-6	4-5-1	6-11-2	14-13	2-6	Chastka (L, 0-1)	193	1:54
Mar. 25	*at Middle Tennessee	W, 8-2	8-13-1	2-7-3	15-13	3-6	Wilson (W, 8-2)	189	1:48
Mar. 28	at Nicholls State	W, 7-4	7-8-1	4-11-3	16-13	3-6	Wilson (W, 9-2)	113	2:04
Apr. 6	*at FIU	L, 0-8 (5)	0-1-1	8-10-0	16-14	3-7	Routzon (L, 3-9)	265	1:26
Apr. 6	*at FIU	L, 5-8	5-8-0	8-9-0	16-15	3-8	Chastka (L, 0-2)	265	2:22
Apr. 7	*at FIU	L, 0-4	0-3-2	4-6-1	16-16	3-9	Hamby (L, 4-3)	239	1:48
Apr. 11	at Central Arkansas	L, 0-5	0-2-0	5-8-0	16-17	3-9	Wilson (L, 9-3)	111	1:18
Apr. 12	at Memphis	L, 1-6	1-6-3	6-8-1	16-18	3-9	Hamby (L, 4-4)	111	1:44
Apr. 14	*North Texas	W, 2-1	2-1-1	1-5-1	17-18	4-9	Hamby (W, 5-4)	364	1:52
Apr. 14	*North Texas	W, 2-1	2-6-9	1-9-3	18-18	5-9	Wilson (W, 10-3)	364	1:52
Apr. 15	*North Texas	L, 1-4	1-1-0	4-7-1	18-19	5-10	Hamby (L, 5-5)	133	2:03
Apr. 18	Jackson State	W, 5-2	5-9-0	2-7-1	19-19	5-10	Routzon (W, 4-9)	101	1:44
Apr. 19	at Stephen F. Austin	W, 3-1 (8)	3-9-0	1-5-0	20-19	5-10	Wilson (W, 11-3)	103	2:23
Apr. 21	*Western Kentucky	L, 1-4	1-5-0	4-5-0	20-20	5-11	Wilson (L, 11-4)	196	2:05
Apr. 21	*Western Kentucky	L, 1-4	1-5-2	4-7-0	20-21	5-12	Wilson (L, 11-5)	196	1:55
Apr. 22	*Western Kentucky	W, 1-0	1-5-0	0-5-0	21-21	6-12	Wilson (W, 12-5)	176	1:46
Apr. 24	*Florida Atlantic	W, 8-3	8-10-4	3-6-3	22-21	7-12	Hamby (W, 6-5)	964	1:45
Apr. 24	*Florida Atlantic	W, 4-3	4-7-1	3-10-0	23-21	8-12	Wilson (W, 13-5)	964	2:05
Apr. 25	*Florida Atlantic	L, 3-6	3-7-1	6-8-1	23-22	8-13	Wilson (L, 13-6)	207	2:01
May 5	*at No. 5 UL-Lafayette	W, 4-2	4-7-0	5-2-1	24-22	9-13	Hamby (W, 7-5)	1529	1:46
May 5	*at No. 5 UL-Lafayette	L, 3-8	3-6-2	11-1-8	24-23	9-14	Wilson (L, 13-7)	1529	2:21
May 6	*at No. 5 UL-Lafayette	L, 4-11	4-5-1	13-11-0	24-24	9-15	Chastka (L, 0-3)	1101	2:16

home games in bold

- (1) ULM Mardi Gras Classic (Monroe, La.)
- (2) Houston Hilton Plaza Invitational (Houston, Texas)
- (3) College of Charleston Cougar Classic (Charleston, S.C.)
- (4) NSU Lady Demon Classic

* Sun Belt Conference games

**2012 ULM Softball
Overall Statistics for ULM (as of May 07, 2012)
(All games Sorted by Batting avg)**

Record: 24-24 Home: 12-6 Away: 7-15 Neutral: 5-3 Sun Belt: 9-15

Player	avg	gp-gs	ab	r	h	2b	3b	hr	rbi	tb	slg%	bb	hp	so	gdp	ob%	sf	sh	sb-att	po	a	e	fld%
Wainwright, Karli	.388	15-14	49	10	19	1	2	0	1	24	.490	1	1	7	0	.412	0	0	5-8	9	0	1	.900
Salanoa, Janel	.308	45-44	133	21	41	6	1	3	23	58	.436	14	1	10	1	.376	1	0	16-17	282	20	2	.993
Navarrete, Miyuki	.301	47-46	133	27	40	8	0	3	18	57	.429	12	4	22	0	.371	2	5	28-30	101	66	8	.954
Cacioppo, Alexis	.274	48-48	135	26	37	7	0	6	25	62	.459	20	2	23	0	.376	0	3	5-7	66	107	11	.940
Girardi, Katie	.250	19-5	28	3	7	1	0	2	8	14	.500	2	0	10	0	.300	0	0	0-0	0	0	0	.000
McCall, Haley	.228	47-47	136	15	31	13	1	1	17	49	.360	8	0	30	0	.271	0	3	12-13	58	4	4	.939
Cassel, Roxy	.227	48-48	119	15	27	6	0	2	20	39	.328	31	1	22	0	.388	1	2	4-5	176	27	2	.990
Pastor, Charlotte	.224	44-41	116	15	26	1	0	0	6	27	.233	11	1	20	0	.297	0	4	5-6	41	15	1	.982
Boening, Kayla	.209	48-48	129	13	27	2	2	0	10	33	.256	17	2	25	0	.311	0	0	11-18	62	73	11	.925
DiMattia, Elena	.198	46-38	111	12	22	1	0	0	3	23	.207	8	2	27	0	.264	0	5	6-8	49	2	3	.944
Miller, Mackenzie	.193	48-48	119	17	23	8	0	0	10	31	.261	12	1	41	0	.273	0	5	10-10	81	9	2	.978
Wilson, Haylie	.071	9-6	14	0	1	1	0	0	1	2	.143	2	0	5	0	.188	0	0	1-1	15	22	1	.974
Routzon, Stephanie	.000	2-1	1	0	0	0	0	0	0	0	.000	0	0	1	0	.000	0	0	0-0	1	18	2	.905
Chastka, Jessica	.000	1-0	0	0	0	0	0	0	0	0	.000	0	0	0	0	.000	0	0	0-0	1	10	2	.846
Totals	.246	48	1223	174	301	55	6	17	142	419	.343	138	15	243	1	.329	4	27	103-123	944	385	51	.963
Opponents	.286	48	1271	204	364	61	6	25	178	512	.403	133	23	160	1	.362	8	31	43-55	956	414	64	.955

LOB - Team (280), Opp (320). DPs turned - Team (17), Opp (14). IBB - Team (2), Navarrete 1, Salanoa 1. Picked off - Cacioppo 1, Miller 1.

(All games Sorted by Earned run avg)

Player	era	w-l	app	gs	cg	sho	sv	ip	h	r	er	bb	so	2b	3b	hr	b/avg	wp	hp	bk	sfa	sha
Hamby, Samantha	3.25	7-5	22	17	6	2/0	0	84.0	74	48	39	64	51	10	2	4	.240	2	8	1	3	11
Wilson, Haylie	3.54	13-7	32	16	12	1/0	0	136.1	167	80	69	33	64	29	2	13	.300	4	8	0	4	14
Routzon, Stephanie	4.01	4-9	18	14	4	0/0	0	73.1	92	53	42	31	32	18	2	5	.296	0	7	2	0	5
Chastka, Jessica	5.91	0-3	11	1	0	0/0	0	21.1	31	23	18	5	13	4	0	3	.323	3	0	0	1	1
Totals	3.73	24-24	48	48	22	3/0	0	315.0	364	204	168	133	160	61	6	25	.286	9	23	3	8	31
Opponents	2.77	24-24	48	48	30	8/1	2	318.2	301	174	126	138	243	55	6	17	.246	17	15	0	4	27

PB - Team (5), Cassel 5, Opp (19). Pickoffs - Team (0), Opp (2). SBA/ATT - Cassel (43-55), Wilson (14-18), Hamby (11-15), Routzon (12-15), Chastka (6-7).



2012 ULM Softball
Conference statistics for ULM (as of May 07, 2012)
(Sun Belt games only Sorted by Batting avg)

Record: 9-15 Home: 7-5 Away: 2-10 Sun Belt: 9-15

Player	avg	gp-gs	ab	r	h	2b	3b	hr	rbi	tb	slg%	bb	hp	so	gdp	ob%	sf	sh	sb-att	po	a	e	fld%
Navarrete, Miyuki	.308	24-24	78	12	24	2	0	2	6	32	.410	6	1	14	0	.360	1	1	17-18	38	27	2	.970
Salanoa, Janel	.271	24-23	70	10	19	3	0	2	8	28	.400	9	1	7	0	.363	0	0	7-7	161	4	0	1.000
Girardi, Katie	.267	14-1	15	1	4	1	0	1	5	8	.533	1	0	4	0	.313	0	0	0-0	0	0	0	.000
Cassel, Roxy	.246	24-24	57	6	14	4	0	1	10	21	.368	17	1	12	0	.421	1	0	3-3	78	13	2	.978
Pastor, Charlotte	.238	24-24	63	9	15	1	0	0	2	16	.254	9	1	5	0	.342	0	3	2-3	17	8	0	1.000
Boening, Kayla	.237	24-24	59	4	14	2	0	0	4	16	.271	6	0	10	0	.308	0	0	4-7	36	42	7	.918
McCall, Haley	.232	24-24	69	5	16	8	0	1	11	27	.391	3	0	18	0	.264	0	1	4-4	30	0	1	.968
DiMattia, Elena	.183	24-24	71	4	13	0	0	0	2	13	.183	5	0	16	0	.237	0	1	3-5	40	2	3	.933
Cacioppo, Alexis	.176	24-24	68	8	12	3	0	2	7	21	.309	10	1	9	0	.291	0	0	3-3	26	61	5	.946
Miller, Mackenzie	.167	24-24	54	6	9	3	0	0	2	12	.222	6	0	20	0	.250	0	4	4-4	44	7	1	.981
Wilson, Haylie	.000	1-0	1	0	0	0	0	0	0	0	.000	0	0	0	0	.000	0	0	0-0	3	9	1	.923
Routzon, Stephanie	.000	1-0	1	0	0	0	0	0	0	0	.000	0	0	1	0	.000	0	0	0-0	1	3	0	1.000
Chastka, Jessica	.000	1-0	0	0	0	0	0	0	0	0	.000	0	0	0	0	.000	0	0	0-0	1	10	2	.846
Totals	.231	24	606	65	140	27	0	9	57	194	.320	72	5	116	0	.317	2	10	47-54	476	194	24	.965
Opponents	.285	24	641	105	183	28	3	14	88	259	.404	68	12	68	0	.362	6	10	21-26	487	213	26	.964

LOB - Team (143), Opp (155). DPs turned - Team (9), Opp (7). IBB - Team (2), Salanoa 1, Navarrete 1. Picked off - Miller 1, Cacioppo 1.

(Sun Belt games only Sorted by Earned run avg)

Player	era	w-l	app	gs	cg	sho	sv	ip	h	r	er	bb	so	2b	3b	hr	b/avg	wp	hp	bk	sfa	sha
Hamby, Samantha	2.70	4-2	11	9	4	0/0	0	46.2	38	21	18	32	24	6	0	2	.224	1	4	1	1	4
Wilson, Haylie	3.91	5-5	17	9	6	1/0	0	73.1	88	46	41	16	29	13	2	9	.295	4	5	0	4	4
Chastka, Jessica	5.15	0-3	8	1	0	0/0	0	17.2	28	18	13	3	8	2	0	2	.341	3	0	0	1	1
Routzon, Stephanie	5.25	0-5	8	5	1	0/0	0	21.1	29	20	16	17	7	7	1	1	.319	0	3	1	0	1
Totals	3.87	9-15	24	24	11	1/0	0	159.0	183	105	88	68	68	28	3	14	.285	8	12	2	6	10
Opponents	2.16	15-9	24	24	16	3/0	1	162.1	140	65	50	72	116	27	0	9	.231	5	5	0	2	10

PB - Team (3), Cassel 3, Opp (6). Pickoffs - Team (0), Opp (2). SBA/ATT - Cassel (21-26), Wilson (5-7), Hamby (5-7), Routzon (6-6), Chastka (5-6).



ULM Game Highs

BATTING

At bats:	36	at South Alabama (Mar. 10)
Runs scored:	12	vs. Grambling State (Feb. 12)
Hits:	15	vs. Grambling State (Feb. 12)
RBI:	9	vs. Grambling State (Feb. 12)
Doubles:	3	(4 times)
Triples:	2	vs. Southern (Mar. 4)
Home runs:	2	vs. Wagner (Feb. 25) at FIU (Apr. 6) at UL-Lafayette (May 6)
Total bases:	21	vs. Southern (Mar. 4)
Walks:	9	vs. Stephen F. Austin (Mar. 7)
Strikeouts:	14	at South Alabama (Mar. 10)
Sac hits:	4	at Charleston (Feb. 25)
Sac flies:	1	(4 times)
Stolen bases:	12	vs. Grambling State (Feb. 12)
Hit by pitch:	2	vs. SIU-Edwardsville (Feb. 10)
Caught stealing:	3	at Northwestern State (Mar. 3)
Runners LOB:	13	vs. Stephen F. Austin (Mar. 7)
Hit into DP:	2	vs. IUPUI (Feb.10)

FIELDING

Putouts:	27	vs. SIU-Edwardsville (Feb. 10)
Assists:	14	(4 times)
Errors:	4	vs. SIU-Edwardsville (Feb. 10) vs. Southeast Missouri (Feb. 11) vs. Florida Atlantic (Apr. 24)
Passed balls:	1	(5 times)
DPs turned:	2	vs. North Texas (Apr. 15)

PITCHING

Innings pitched:	9.0	vs. SIU-Edwardsville (Feb. 10)
Runs allowed:	13	vs. Houston (Feb.19)
Earned runs:	13	vs. Houston (Feb. 19)
Walks allowed:	7	at Samford (Feb. 22) at South Alabama (Mar. 11)\ at FIU (Apr. 6)
Strikeouts:	8	vs. Southeast Missouri (Feb. 11)
Hits allowed:	13	vs. Houston (Feb. 19)
Doubles allowed:	4	at South Alabama (Mar. 11) at Nicholls State (Mar. 28) at FIU (Apr. 6)
Triples allowed:	1	(6 times)
Homers allowed:	2	(4 times)
Wild pitches:	2	at South Alabama (Mar. 10) at FIU (Apr. 6)
Hit batters:	2	(4 times)

Individual Game Highs

BATTING

At bats:	5	(4 times)
Runs scored:	3	(4 times)
Hits:	3	(12 times)
RBI:	4	Alexis Cacioppo vs. Grambling State (Feb. 12) Haley McCall vs. Troy (Mar. 15)
Doubles:	1	(55 times)
Triples:	1	(6 times)
Home runs:	1	(17 times)
Total bases:	7	Miyuki Navarrete vs. Southern (Mar. 4)
Walks:	2	(18 times)
Strikeouts:	3	(7 times)
Sac hits:	2	Miyuki Navarrete at Northwestern State (Mar. 4)
Sac flies:	1	(4 times)
Stolen bases:	3	Mackenzie Miller at Nicholls State (Mar. 28)
Hit by pitch:	1	(15 times)
Caught stealing:	1	(20 times)
Runners LOB:	4	Kayla Boening vs. Northwestern State (Feb. 11) Mackenzie Miller at Northwestern State (Mar. 4)

FIELDING

Putouts:	14	Janel Salanoa vs. McNeese State (Feb. 18)
Assists:	6	Kayla Boening vs. McNeese State (Feb. 18)
Errors:	3	Kaley McCall vs. Southeast Missouri (Feb. 11)
Passed balls:	1	(5 times)

PITCHING

Innings pitched:	8.0	(5 times)
Runs allowed:	8	Stephanie Routzon vs. Southeast Missouri (Feb. 11) Stephanie Routzon vs. Houston (Feb. 19)
Earned runs:	8	Stephanie Routzon vs. Houston (Feb. 19)
Walks allowed:	6	Samantha Hamby at Samford (Feb. 22)
Strikeouts:	7	Samantha Hamby vs. Stephen F. Austin (Mar. 7) Stephanie Routzon vs. Jackson State (Apr. 18)
Hits allowed:	11	Haylie Wilson at Nicholls State (Mar. 28)
Doubles allowed:	4	Haylie Wilson at Nicholls State (Mar. 28) Samantha Hamby at FIU (Apr. 6)
Triples allowed:	1	(6 times)
Homers allowed:	2	Stephanie Routzon vs. Houston (Feb. 19) Haylie Wilson at Northwestern State (Mar. 4) Haylie Wilson vs. Florida Atlantic (Apr. 25)
Wild Pitches:	1	(9 times)
Hit batters:	2	Stephanie Routzon at Middle Tennessee (Mar. 24) Haylie Wilson vs. Western Kentucky (Apr. 22)

TV/Radio Chart



21
Kayla Boening
 UT • 5-4 • Fr.
 San Antonio, Texas



22
Alexis Cacioppo
 IF • 5-5 • Fr.
 La Habra, Calif.



13
Roxy Cassel
 C/DP • 5-8 • Sr.
 Deer Park, Texas



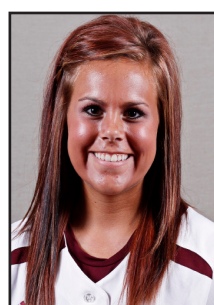
15
Jessica Chastka
 P • 5-8 • Sr.
 College Station, Texas



3
Elena DiMattia
 OF • 5-4 • Jr.
 Sunset, La.



24
Katie Girardi
 IF/C • 5-8 • Sr.
 Pembroke Pines, Fla.



9
Samantha Hamby
 P • 5-7 • Jr.
 Monroe, La.



18
Haley McCall
 IF • 5-6 • Jr.
 Grand Chenier, La.



4
Mackenzie Miller
 UT • 5-6 • Fr.
 Evergreen, Colo.



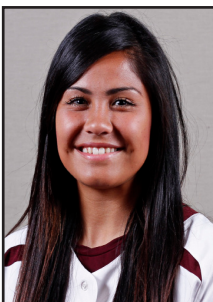
7
Miyuki Navarrete
 IF • 5-6 • So.
 San Jose, Calif.



10
Charlotte Pastor
 IF • 5-3 • Jr.
 Metairie, La.



12
Stephanie Routzon
 P/IF • 6-0 • So.
 Wheat Ridge, Colo.



16
Janel Salanoa
 IF • 5-5 • Jr.
 San Jose, Calif.



6
Karli Wainwright
 OF • 5-4 • Jr.
 Lake Charles, La.



14
Haylie Wilson
 P • 5-3 • Fr.
 Middleburg, Fla.



Head Coach
Rosemary Holloway-Hill